

Using the Telescope

Knobs with **GREEN** colored dots are the **ONLY** knobs that should be adjusted. There are four.



Altitude Tension Knob



OTA (Optical Tube Assembly) Knob



Focus Knobs
(one on either side)



EZ Finder On/Off Knob



There are two booklets and a red/white headlight in the pouch for your use. Use the white light while setting up the telescope. Once your eyes adjust to the darkness (about 20 minutes), use the red light to make adjustments if necessary.

The eyepiece lens cap and aperture end cap are also marked with **GREEN** colored dots.



Eyepiece Lens Cap



Aperture End Cap

Using the Telescope

- ① Loosen the OTA (Optical Tube Assembly) knob and lift up the OTA.



- ② Tighten the OTA knob to secure and prevent the OTA from falling down.



- ③ The altitude tension knob may need to be loosened to rotate the OTA.



- ④ Remove the aperture end cap prior to using and **NEVER** point the telescope at, or attempt to look at the sun. Blindness and serious damage to the telescope will occur. **An adult** should always be present when children are using the telescope.



Using the Telescope



5

Point the OTA at the object you'd like to look at.

6

Turn the EZ finder on (using the knob with the green dot). The red dot should point at the object you'd like to view in the eyepiece.



7

PLEASE turn off the EZ finder after locating your object to save the battery power.



8

Remove the lens cap from the eyepiece and use the focus knobs on either side to bring the object into focus.



Storing the Telescope

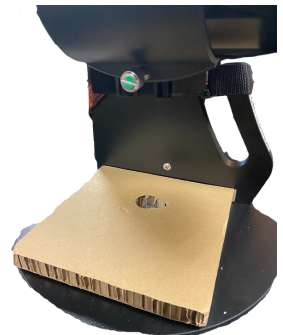


①

Put the aperture end cap on the front of the OTA (Optical Tube Assembly).

②

Replace the cardboard square under the OTA if you removed it.



③

Lower the OTA down and firmly press down onto the cardboard.

④

Be certain that the eyepiece and focuser is turned towards the carry handle, as shown in the photo.

Also be certain that the EZ finder knob (with the green dot) is **turned off**...listen for the click as you turn it off.



Storing the Telescope



5 Make sure that the eyepiece is NOT pressing against the hand holder and that there is space between the eyepiece and the handle.

6 And then tighten the OTA knob to secure it in place.



7 Insert the pillows as pictured, to protect the telescope when in transit.

8 Lay the telescope down with handle up and the EZ finder cushioned with the pillow as shown.

