

BNPL 31609003103927

**HUNTERKOR**

**HDPDVD-01**

**10.1" TFT Screen  
Portable Video Player**



**USER MANUAL**

# CONTENT

<b>IMPORTANT SAFETY INSTRUCTIONS AND PRECAUTIONS</b> .....	4
<b>CARE OF DISCS</b> .....	5
<b>WHAT'S IN THE BOX</b> .....	6
<b>THE PLAYER</b> .....	6
<b>INSTALLATION</b> .....	7
Indoor Use .....	7
In-car Use .....	7
<b>PLAYBACK</b> .....	8
The Remote Control .....	8
Key Functions .....	9
Loading and Playing a Disc .....	9
Display .....	10
Angle .....	11
Subtitle .....	11
Audio .....	11
Zoom .....	12
ALL Repeat.....	12
Playback MP3/MPEG-4 Disc.....	13
Playback Of DIVX content .....	13
Play USB and SD/MMC Card .....	14
<b>SYSTEM SETUP</b> .....	14
General Setup Page .....	14
TV Display .....	14
Angle Mark .....	14
OSD Language .....	15
Captions .....	15
Screen Saver .....	15
Last Memory .....	15
Mp3 Lyric .....	15

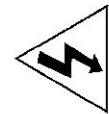
# CONTENT

Audio Setup Page .....	15
Speaker Setup .....	15
Equalizer .....	15
Video quality Setup Page .....	16
Preferences Page.....	16
TV Type.....	16
PBC .....	16
Audio .....	16
Subtitle.....	17
Disc Menu.....	17
Parental .....	17
Password.....	17
Default.....	17
<b>TROUBLESHOOTING</b> .....	18
Change the Remote Control Battery .....	19
Charging the DVD Player .....	19
<b>SPECIFICATIONS</b> .....	19
DVD Player .....	19

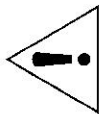
## IMPORTANT SAFETY INSTRUCTIONS AND PRECAUTIONS

### Warning:

TO REDUCE THE RISK OF FIRE OR ELECTRIC SHOCK, DO NOT EXPOSE TO MOISTURE, DO NOT REMOVE COVER (OR BACK). NO USER-SERVICEABLE PARTS INSIDE. REFER SERVICING TO QUALIFIED SERVICE PERSONNEL. SERVICE MUST BE CARRIED OUT BY QUALIFIED PERSONNEL ONLY, OR THE WARRANTY IS NOT VALID.



The lightning flash with arrowhead symbol, within an equilateral triangle, is intended to alert the user to the presence of non-insulated dangerous voltage. Within the product. That may be of sufficient magnitude to constitute a risk of electric shock to persons.



The exclamation point within an equilateral triangle is intended to alert user to the presence of important operating procedures and maintenance (service) instruction in the literature accompanying the appliance.



Laser product symbol: located on the rear panel of the unit (in some cases at the bottom side), indicates that this player is a Class 1 laser product; it uses only weak laser and no hazardous radiation outside of the unit.

### Installation

Ensure that the portable DVD player is installed in accordance with the instructions and illustrations provided in this manual.

## CARE OF DISCS

### General Precaution

- 1) Read through this instruction manual before installation and use.
- 2) Do not touch the power plug with wet hand.
- 3) Switch off the main power when the unit is not in use. (Disconnect the power plug from the power outlet when you do not intend to use the unit for a longer period of time.)
- 4) Do not open the cover or touch any of the components inside the unit, only for qualified technicians.
- 5) Do not expose the unit to direct sunlight or nearby objects that radiate heat to avoid damage to the unit.
- 6) Do not place the unit in moist and humid environments.
- 7) Please ensure the ventilation holes are not covered to avoid overheating and malfunction.
- 8) Clean the panel and case with soft dry cloth only, do not apply any kind of thinner, alcohol or sprays.
- 9) The apparatus shall not be exposed to dripping or splashing, nor should any objects filled with liquids, such as vases, be placed on the apparatus.

### Clean the Machine

- 1) Please ensure the machine is power off before cleaning.
- 2) Do not use any chemicals or cleaning agents to clean the machine.
- 3) Use slightly damp cloth to clean the outside of the machine.

### Do not Open

To reduce the risk of Electric Shock, Do not remove cover (or back). No user-serviceable parts inside. Refer servicing to qualified service personnel.

### CARE OF DISCS

- 1) Do not place disks near heat sources such as direct sunlight or high humidity areas.
- 2) Stack disks on top of each other, in the same way.
- 3) Do not touch the disk surface, hold the disc by the edges.
- 4) Do not use adhesive tape on the disk surface.
- 5) Wipe the disk from inside to outside with a soft cloth.
- 6) Do not use gasoline, non-disc special or antistatic cleaning agents to clean the disc because these substances will cause damage.



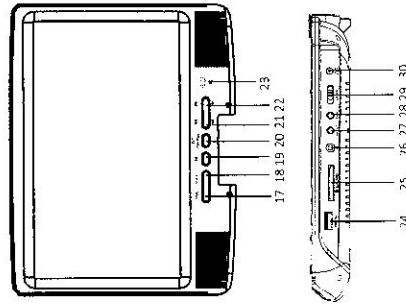
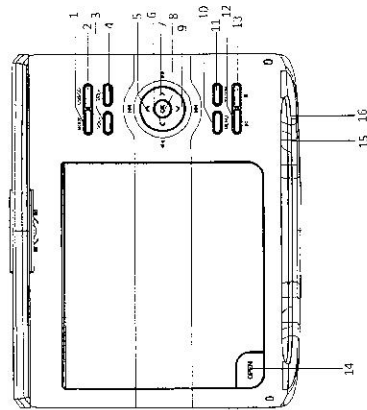
# WHAT'S IN THE BOX

## WHAT'S IN THE BOX

1 X Main DVD player with 10.1" 16:9 LCD display	1 X Remote control (with battery)
1 X 12V DC car charger	1 X Power adaptor
1 X AV Cable	1 X User manual
1 X Car bag	

Please check the contents of the packaging carefully.

## THE PLAYER



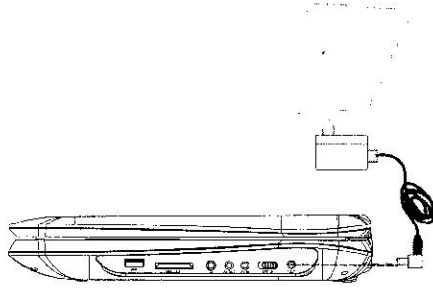
Item	Description	Item	Description
1	Mode Button	16	Power LED
2	DVD/USB/SD Button	17	Volume+
3	Volume-	18	Volume-
4	Volume+	19	Play/Pause
5	Up Button/Previous	20	TFT OFF/ON
6	Left Button/Fast Forward	21	Next/Fast Forward
7	Right Button/Fast Reind	22	Previous/Fast Reind
8	OK/Confirm Button	23	IR Sensor
9	Down Button/Next	24	USB Host Port
10	Menu Button	25	SD/MMC Card Slot (SDHC Compatible)
11	Setup Button	26	3.5mm Stereo Headphone Output
12	Play/Pause Button	27	AV Output
13	Stop Button	28	AV Input
14	Drive Access Button	29	Main Power ON/OFF Switch
15	Charger LED	30	12V DC Input

# INSTALLATION

## INSTALLATION

### Indoor Use

1. Locate a spare mains outlet and turn it OFF.
2. Plug the supplied AC adaptor in to the outlet.
3. Connect the other end to the 12V DC input socket.
4. Turn the main outlet ON.
5. Turn the main Power Switch on the Player to the ON position.



### In-car Use

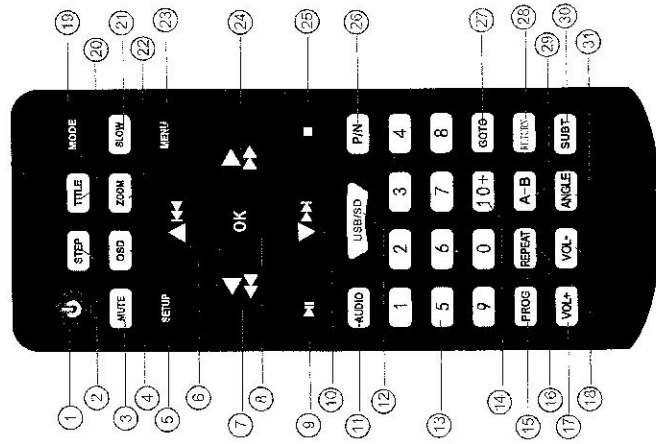
1. With the vehicle ignition off, connect the supplied car charger to the vehicle power outlet.
2. Connect the other end to the DC power input on the side of the DVD player.
3. Turn the vehicle ignition to ON or ACC to power the outlet and slide the DVD player power switch to the ON position.

**Note: Care should be taken with all cables and connectors with the DVD player. Please ensure that there is no tension on any connectors as this may damage the units. Tidy any excess cables that may damage the player.**

# PLAYBACK

## PLAYBACK

### The Remote Control



Item	Function
1	Power
2	Step
3	Mute
4	OSD
5	DVD Setup
6	UP/Previous
7	Left/Fast Rewind
8	OK
9	Pause/Play
10	Down/Next
11	Audio
12	USB/SD
13	Number Pad
14	10+
15	Prog
16	Repeat
17	Volume+
18	Volume-
19	Mode
20	Title
21	Slow
22	Zoom
23	Menu
24	Right/Fast Forward
25	Stop
26	P/N
27	Goto
28	Return
29	A-B
30	Subt
31	Angle

# PLAYBACK

## Key Functions

Button	Action
Power	Switches the player ON or OFF
USB/SD	Press to cycle between DVD(Optical Disc), Card reader or USB drive. Use UP/Down/Left/Right button to navigate and the OK button select.
Setup	Enter or Exit the setup menu.
Number Pad	Use to enter an item in a menu or to enter a password.
OK(Confirm)	Press to select an option or validate a setting.
Previous	Press to skip to the previous chapter or track.
Next	Press to skip to the next chapter or track.
Play/Pause	Press to start playback or to pause playback.
Stop	Press to stop playback.
Fast Forward/Rewind	Use to Fast Forward or Rewind at Speeds of 2X, 4X, 8X, 16X and 32X normal playback speeds.
Mute	Mutes the Audio Output on the Player.
Volume+/-	These buttons are used to increase or decrease the Audio Output.
Audio	Select available audio language for the DVD
DVD Title	Return to Disc Main Menu.
Zoom	Zoom in of the image 2X, 3X or 4X the size of the original image or zoom out of the image 1/4, 1/3 or 1/2 size of the original image.
Angle	Display the available angles for discs containing multi-angles.

## Loading and Playing a Disc.

1. After connecting power to the DVD Player, push the Power On/Off switch to the "on" Position.
2. Place a disc gently into the tray.
  - You should hear and feel the disc snap firmly into place.
  - Place a disc into the tray with the disc's label facing up.
3. Close the DVD cover until it clicks shut. The unit will now load disc and commence playback.
4. Stopping Play.
  - Press the STOP (■) Button during play. Double press this button will remove last memory data. Disc will be played from the beginning.

# PLAYBACK

5. Play/Pause.  
Press the Play/Pause(▶|) button on the remote during play to pause playback. To resume, Press the Play/Pause (▶|) button once again.
6. Fast Forward/Fast Rewind  
Press Fast Forward or Fast Reverse to achieve the place you desired with speed adjustable during 2X, 4X, 8X, 16X, 32X times.
7. Menu  
A DVD is divided into sections called titles and chapters. When you play a DVD, a root Menu of the disc will appear on the screen of your DVD player. The contents of the Menu vary from disc to disc. Press MENU during playback to display the menu.

## Display

Playing Time and Remaining Time

- A. During playback, press the "Display" button to display the Current Title Number, the total Number of Title, the Current Chapter Number, the total Number of Chapters, and the Playing elapsed Time for the title. The heading will Disappear automatically after 3 seconds if "Display" button is not pressed.

Title Elapsed  
TT 01/01.CH 02/17 2:00:00

- B. Press "Search" constantly to choose the options below in sequence.  
Title Elapsed: The elapsed time of the title.  
Title Remain: The remaining time of the title.  
Chapter Elapsed: The elapsed time of the chapter.  
Chapter Remain: The remaining time of the chapter.  
Display off: The DVD's time information will not be displayed.

▶ Title Elapsed   ▶ Title Remain   ▶ Chapter Elapsed  
◀ Display Off   ◀ Chapter Remain   ◀ Chapter Remain

# PLAYBACK

## Angle

During playback of a disc, press the "ANGLE" button to display the available angles for discs containing multi-angles, with the current angle number and the total number of angles displaying. Press "ANGLE" to select another angle, then press again to exit and return to the normal viewing angle. The angle display will disappear automatically if the "ANGLE" button is not pressed again within 3 seconds.

**Note: Not all discs contain this feature.**

 1/3

## Subtitle

During disc playback press "SUB" to select the subtitle language you desire, with the current Subtitle Language Number and the Total Number of Subtitle Languages displayed. If there are Multiple languages press "SUB" again to select another subtitle Language. To turn subtitles OFF, press the "SUB" button until "Subtitle Off" is displayed. The Subtitle display will disappear automatically if the "SUB" button is not pressed again within 3 seconds.

Note : Some DVDs only allow access to this function through DVD Menu.

Subtitle 01/02

## Audio

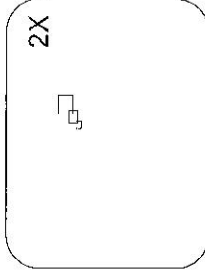
During playback press "AUDIO" to select the audio language you desire, with the current Audio Channel Number and the total Number of Audio Channels displayed. Press "AUDIO" again to Select another audio language. The audio display will disappear automatically if the "AUDIO" button is not pressed within 3 seconds.

Audio 1/2.AC35.1CH

# PLAYBACK

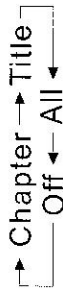
## Zoom

Zoom in of the image 2X, 3X or 4X the size of the original image or zoom out of the image 1/4, 1/3 or 1/2 size of the original image.

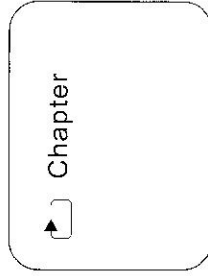


## ALL Repeat

During playback press "REPEAT" constantly to see the repeat mode as right.



- Chapter: Repeat the current chapter.
- Title: Repeat the current title.
- All: Repeat all chapters and titles.
- Off: Resume normal playback.



# PLAYBACK

## Playback MP3/MPEG-4 Disc

When a MP3/MPEG-4 disc is inserted into the unit, the menu screen appears automatically. You can use the menu screen to select your desired folders and songs or the system plays the songs in the order they were burned onto the disc.

1. Press the ▲ or ▼ button to choose a folder from the folder list .
2. Press "OK" to select the highlighted folder. The songs available under the folder will be listed .
3. Use ▲ or ▼ button to choose a song from the list. Press "OK" to select and begin Playback of the highlighted song .
4. Use the ►► button to move to the next song. Press the ◀◀ button to move to the beginning of the previous song.
5. Press the ▲ button to select the current folder and press "OK" to confirm. Then you can back to the folder list .

## Playback of DIVX content

The DIVX format is capable of holding high quality video and sound in a highly compressed file format. File types such as AVI are typically able to hold more data in a smaller file. For example (as below) a 1.5 hour DVD file coded in MPEG-2 takes up space between 1.5 and 2.0GB. Whereas, if it was coded in DIVX, the file would only be between 600 and 800MB.

1.5 hours file	MPEG-2 Format	DIVX Format
DVD(MPEG-2)	About 1.5-2GB	About 600-800MB
VCD(MPEG-1)	About 800MB- 1 G	About 200-300 MB

## Comparing MPEG-1, MPEG-2 and MPEG-4

	MPEG-1	MPEG-2	MPEG-4
Speed(kb/s)	1380kb/s (352x288)	6500kb/s (720x576)	880kb/s (720x576)
Video quality	Good	Excellent	Perfect
Hardware requirement	Low	Middle	High

However depending on how the file was encoded, compatibility may still be an issue with certain types of DIVX or MP4 type files.

We highly recommend that Files be tested and "Trial & Error" be used to find the best compromise between quality and file size for encoded files.

# SYSTEM SETUP

## Play USB and SD/MMC Card

1. Plug in the USB device in correct orientation. Press [DVD/SD/USB], then choose USB to select the content.
2. Insert a memory card to the SD/MMC slot. Press [DVD/SD/USB] and select SD to play memory card.

## SYSTEM SETUP

1. Press "SETUP" on the remote to bring up the SYSTEM SETUP MENU.
2. Press the ◀ or ▶ buttons to go to or return to the required settings page.
3. When the required page is shown press the "OK" button to enter the page.
4. Use the ▲ or ▼ buttons to navigate to the feature to be changed and then press the ▶ button to enter the submenu.
5. Use the ▲ or ▼ buttons to select the submenu item and then press the "OK" button to confirm.
6. Press the ◀ button to return to the previous menu or press the "SETUP" button to close the Setup Screen.

**Note: Not all discs contain these features. Some features are disc dependent.**

## General Setup Page

### TV Display

- Normal/PS (4:3) : When the player outputs signal to a normal monitor or TV, wide-screen images are shown on the screen. But with some parts cropped automatically.
- Normal/LB : When the player outputs signal to a normal monitor or TV, a normal picture is shown on the screen with a black strip at both the top and bottom of the screen.
- Wide (16:9) : When the player outputs signal to a wide screen monitor or TV, a wide picture is shown on the full screen.

### Angle Mark

- ON: The screen will show the angle mark icon. (If an angle option is available).
- OFF: The screen will not display the Angle Mark.

# SYSTEM SETUP

## OSD Language

You can choose one out of several different languages as the OSD setup language.

## Captions

- ON: Captions are displayed. (If an captions available).
- OFF: The screen will not display captions.

## Screen Saver

- ON: Enables screen saver.
- OFF: Disables screen saver(off).

**Note: The DVD player will enter the Screen Saver mode after approximately five minutes if the same image remains on the screen.**

## Last Memory

- ON: The unit will return to the last position on the disc.
- OFF: The unit will not return to last position on the disc.

## Mp3 Lyric

- ON/OFF

## Audio Setup Page

### Speaker Setup

- Downmix ● LT/RT      RIGHT/LEFT Channel: Mixes a 5.1Ch audio signal to 2 audio channels and then outputs to the left and right speakers.
- Stereo      Outputs a stereo signal to the left and right speakers.
- Post DRC      ON/OFF/AUTO

### Equalizer

- EQ Type      ● None, Rock, Pop, Live, Dance, Techno, Classic, Soft
- Bass Boost      ● ON/OFF
- Super Bass      ● ON/OFF
- Treble Boost      ● ON/OFF



# SYSTEM SETUP

## Video Quality Setup Page

Adjust the image quality.

1. Use the ▲ or ▼ buttons to select the option to change and the press the "OK" button.
2. Press the ◀ or ▶ buttons to adjust the setting and then press the "OK" button to confirm the changes.

Options are

- Sharpness : high/medium/low
- Brightness : 0-20
- Contrast : 0-16
- Gamma : none/low/medium/high
- Hue : -9~+9
- Saturation : -9~+9

## Preference Page

The Preferences page cannot be accessed if a disc is in the player. Please remove any disc before accessing this page.

## TV Type

Used for settings the video format output if the player is connected to an external display.

- PAL : Video output is PAL only.
- Multi : Video output is as per source material.
- NTSC : Video output is NTSC only.

## PBC

- ON/OFF

## Audio

Sets the default Audio language of DVDs played on this player.  
English, French, Spanish, German, Italian, Portuguese, Russian, Thai

# SYSTEM SETUP

## Subtitle

Sets the default Language of the Subtitles of DVDs played on this play.  
English, French, Spanish, German, Italian, Portuguese, Russian, Thai

## Disc Menu

Sets the default Language of the DVD Menu of DVDs played on this play.  
English, French, Spanish, German, Italian, Portuguese, Russian, Thai

**NOTE: Audio, Subtitle and Disc Menu settings are subject to the availability of your selection on the DVD.**

## Parental

Select the parental level you desire for disc with lock-out function or multiple rating levels. There are listed from the level (1 Kid Safe) to the highest level (8 Adult). The setting allows PLAYBACK to be restricted via password.

Note: This function will only work if the disc contains a parental control lockout.

## Password

This function allows you to re-set a new password.

**Note: You have to input the correct password to change the password setting. The default Password is 136900**

## Default

Used to reset the player to Original Factory Defaults.

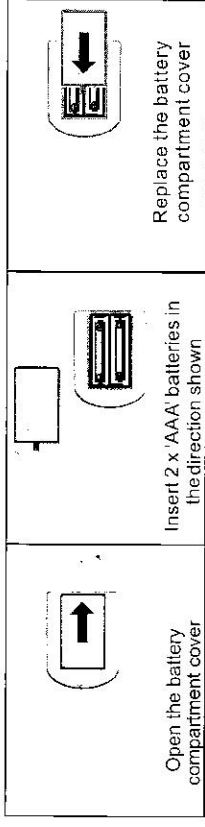
# TROUBLESHOOTING

## TROUBLESHOOTING

QUESTION	ANSWER
Adapter didn't work	<ol style="list-style-type: none"> <li>1. Please check that if the power supply is working normally.</li> <li>2. Ensure that the red status indicator on, change the adapter if not.</li> </ol>
No sound or sound distorted?	<p>Make sure your DVD is connected properly. And all cables are securely inserted into the appropriate jacks.</p> <p>The feature or action cannot be completed at this time because:</p> <ol style="list-style-type: none"> <li>1. The disc's software doesn't support the feature (e.g., angles)</li> <li>2. You've requested a title or chapter number that is out of range.</li> </ol>
Picture is distorted?	<ol style="list-style-type: none"> <li>1. The disc might be damaged. Try another disc.</li> <li>2. It is normal for some distortion to appear during forward or reverse scan.</li> </ol>
Can not forward or reverse?	<ol style="list-style-type: none"> <li>1. Some discs have sections that prohibit rapid scanning or title and chapter skip.</li> <li>2. If you try to skip through the warning information and credits at the beginning of a movie, you won't be able to. This part of the movies often programmed to prohibit skipping through it.</li> </ol>
IR sensor inoperative?	<ol style="list-style-type: none"> <li>1. Ensure that the batteries in the remote are fresh.</li> <li>2. Ensure that the remote sensor eye is not obstructed.</li> <li>3. Ensure that the infrared transmitter is affixed over the sensor eye of the component to be controlled.</li> </ol>
Disc can not play?	<ol style="list-style-type: none"> <li>1. Please use regular disc.</li> <li>2. Insert a disc with the label side facing up.</li> <li>3. Check the type of disc you put into disc tray. This DVD only plays digital video discs, audio CDs and MP3s.</li> </ol>
Just start playing then stopped immediately?	<ol style="list-style-type: none"> <li>1. The disc is dirty. Clean it.</li> <li>2. Condensation has formed. Allow player to dry out.</li> </ol>

# SPECIFICATIONS

## Change the Remote Control Battery



## Charging the DVD Player

In the first instance the player should be left on charge for 12 hours.

Regular charging can be completed in 6 hours with AC charger.

Connect the player to the AC charger or DC charger. The player will charge when connected.

Although the player will charge during playback, the player can be turned off to decrease charging times.

## SPECIFICATIONS

### DVD Player

Compatible Disc:	DVD/VCD/CD/MP3/JPG/AVI
Signal System:	PAL/NTSC
Screen Size:	10.1 Inch
Frequency Response:	20 Hz to 20 KHz
Video Output:	1 Vp-p/75 Ohm, Unbalanced
Audio S/N:	Better than 60 dB
Dynamic range:	Better than 85 dB
Laser:	Semiconductor Laser, Wave Length: 650 nm/795 nm
Power source:	DC12V 1.5 amps
Power Consumption:	13W
Battery Type:	7.4V Li Ion 2400mAh
Charge Time:	Up to 6 hours
Playback Time:	Approx 4 hours
Working temperature:	5 - 40°C
Weight:	1003 grams without accessories
Dimensions (LxWxH):	253mmx208mmx40mm